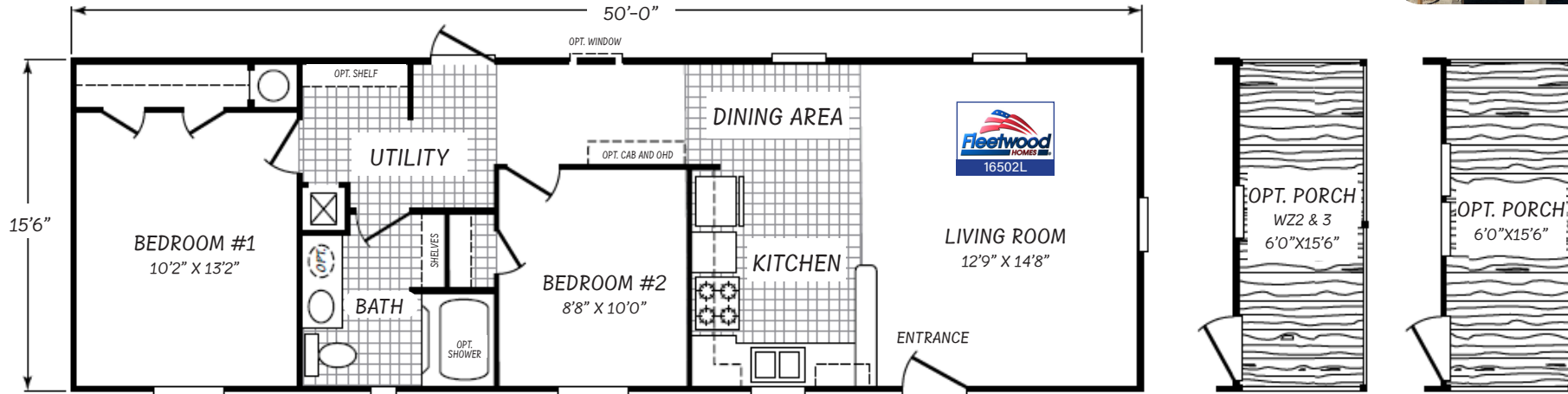


# the Max

2 Bedroom  
 1 Bath  
 775 Square Feet

# \$79,900

includes: delivery & setup, trim-out, A/C, steps, skirting, and a 5 yr home protection plan.



## Standard Features

### CONSTRUCTION:

Texas Manufactured Steel I-Beam Frame  
 Sturdy "C" Channel Cross Members  
 Camber and Reverse-Cambered Engineering  
 2x8 Floor Joists - 16 / 18 / 32 Wide  
 2x6 Floor Joists - 14 / 28 Wide  
 Triple-Fastened O.S.B. Floor Decking  
 Stud-Mounted Electrical Recept/switches  
 Thermal Zone 2  
 R-21 Ceiling / R-11 Walls / R-11 Floors  
 8' Sidewalls - Flat Ceiling Design T/O  
 8' Flat Ceiling Design  
 Heat-Reducing Vented Roof Cavity  
 Water Heater Pan with Exterior Drain

### EXTERIOR:

Owens Corning 25 Year AR Shingles  
 House Type Front Door w/Storm

Privacy-Enhanced Blank Rear Door  
 Standard GFCI Recept  
 20lb Roof Load Construction  
 Vinyl Thermal Pane Windows w/Shutters  
 Keyed-alike Doors (Except Patio Doors)  
 Dead Bolts with Cut Resistant Cylinders

### INTERIOR:

LED Can Lights T/O  
 6-Panel Interior Doors w/Heavy Hinges  
 Floor Mounted Door Stops  
 7lb Rebond Carpet Pad  
 Shaw Industries Carpet  
 Damp-Res. Vinyl-Cvrd Sheetrock Walls  
 Decorative Wall Panels  
 Vinyl Coated Wire Utility Shelf  
 2" Cordless Blinds T/O

Beauflor Vinyl Flooring  
 Soft Close Hinges - All Cabinet Doors

### Baths:

Shut-Off Valves at Sinks and Commodes  
 Wood Trim Mirrors  
 GFCI Recept in Convenient Locations  
 Water Saver Commodes  
 Powerful Exhaust Fans in All Baths  
 Bath Friendly Vinyl Flooring  
 54" Tub/Shower in Guest Bathroom  
 Glamour Bath in Master Bath (select models)

### Kitchen:

Top Rated Stainless Whirlpool Appliances  
 Electric Range  
 18 CF Refrigerator

Dishwasher (select models)  
 Double Bowl Stainless Steel Sink  
 Space Saving Drawer Bank  
 Center Base Cabinet Shelves  
 42" OH Cabinets W/Adjustable Shelves  
 12" Deep Upper Cabinets  
 Hidden European Style Hinges  
 Wilsonart Brand Laminate Countertops  
 Shaker Style Cabinet Doors

### Utilities:

30 Gallon Dual Element Water Heater  
 200 Amp Interior Panel Box  
 SuperPex Water Supply System  
 Plumb, Wire and Vent for Washer/Dryer

## Inc. Upgrades

### INTERIOR

A/C Upflow w/Overhead Ducts  
 Designer Backsplash  
 Stainless Steel Appliances  
 Over Range Microwave

Stainless Kitchen Sink  
 Upgraded Pull-Out Faucet  
 2" Blinds T/O

54" Fiberglass Shower Stall  
 Double Porcelain Bath Sinks  
 Overhead Bath Cabinets

### EXTERIOR

Coach Lights  
 Steel Front Door  
 6' Covered Porch  
 Transom Windows

Exterior Faucets  
 Smart Panel Siding  
 Shutters